

# SFM07A

## AMPLIFIED STAGE MONITOR LOUDSPEAKER SYSTEM



Monitor Series

Acoustic Technologies SFM07A is a self powered stage floor monitor system engineered to provide exceptional performance from an extremely compact, low profile, light weight cabinet.

The SFM07A utilises two 165mm Bass-Mid cone transducers and a 1" High Frequency compression driver coupled to a 90° x 60° waveguide designed specifically for this application. An optimised passive crossover network provides a seamless, phase coherent transition between the system components.

The SFM07A is powered by a highly efficient Class D Power Amplifier Module which features an integrated Switch Mode Power Supply. The amplifier module provides Soft Limit and Thermal Overload protection, balanced XLR audio connectors and an IEC mains inlet.

The cabinet is constructed from premium grade birch ply finished in black AcoustiCoate with a powder coated perforated steel grille to protect the system components. A recessed handle is provided.

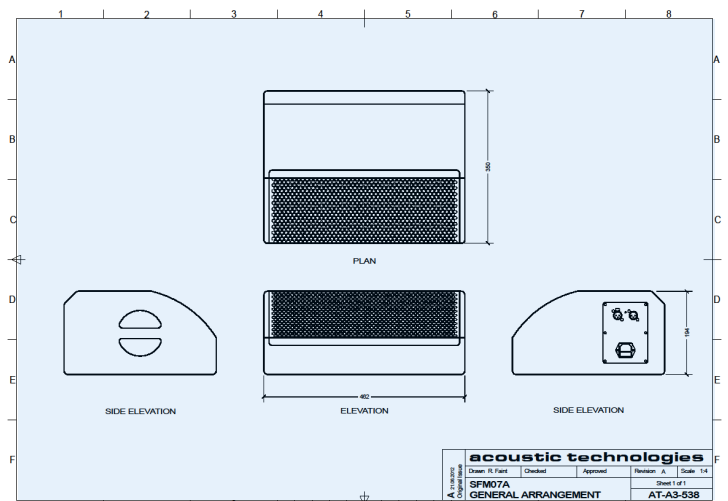
The SFM07A is the ideal stage floor monitor for all applications requiring a compact, low profile self-powered loudspeaker system such as audiovisual presentations, houses of worship and television staging as well as live music and theatre productions.

### Key Features

- ▶ High Efficiency Class D Amplifier Module
- ▶ Flat Accurate Reproduction
- ▶ Ultra Compact and Low Profile
- ▶ 5 Year Warranty

### Overview

- ▶ Dimensions: 462mm(W) x 194mm(H) x 350mm(D)
- ▶ Weight: 13 Kgs
- ▶ Finish: Black AcoustiCoate
- ▶ Transducers: 2x 6.5" Bass - Mid Transducers  
1x 1" HF Compression Driver



# SFM07A

## AMPLIFIED STAGE MONITOR LOUDSPEAKER SYSTEM



### Acoustic Performance

|                           |                         |
|---------------------------|-------------------------|
| Frequency Response        | 100Hz - 16kHz $\pm$ 3dB |
| Sensitivity (Half Space)  | 95dB @ 1 Watt, 1 metre  |
| Maximum SPL (Calculated)  | 118dB @ 1 metre         |
| High Frequency Dispersion | 90° (H) x 60° (V)       |

### System Components

|                       |  |
|-----------------------|--|
| Transducer Complement | 2x 6.5" Bass - Mid Transducers<br>1x 1" HF Compression Driver coupled to a Proprietary Low Distortion Wave Guide |
| Crossover Network     | Optimised Passive Network @ 1.6kHz   |

### Amplifier Specifications

|                               |   |
|-------------------------------|---|
| Input Impedance               | 10 kOhms  |
| Amplifier Module Output Power | 200 Watts   |
| Amplifier Module Type         | Class D Amplifier<br>Switch Mode Power Supply   |
| Amplifier Protection          | Thermal<br>Over Current<br>HF on Input Signal<br>Soft Clip                                  |
| Indicator LEDs                | Mains On  |
| Connectors                    | 1x Female XLR - Signal Input<br>1x Male XLR - Signal Link<br>1x IEC 240 Volt AC Mains Inlet |

### Enclosure Specifications

|                  |                                   |
|------------------|-----------------------------------|
| Physical Size    | 462mm (W) x 194mm (H) x 350mm (D) |
| Weight           | 13 Kgs                            |
| Enclosure Finish | AcoustiCoate Black Elastomer      |
| Grille Finish    | Black Powder Coat                 |
| Hardware         | Handgrip                          |



Sensitivity, Maximum Power and SPL measurements are conducted in accordance with the AES 24 Hour Pink Noise Standard.

Acoustic Technologies reserve the right to alter or amend the SFM07A, without prior warning in the interests of product improvement.

- For further information and downloads please visit [www.atprofessional.com.au](http://www.atprofessional.com.au)

### Suggested Applications

- Live Music  
Vocal & Instrumental Monitors
- Rehearsal Room Monitors
- Corporate Production
- Houses of Worship  
Monitor Systems
- Musical Theatre &  
Sound Stage Monitors
- Television & Radio  
Cue, Review,  
Playback Monitors
- DJ Booth Monitors
- Fashion Runway Monitors

The SFM07A enclosure is proudly manufactured in Australia, constructed of premium grade 12mm and 18mm birch ply.

The transducers are protected by a perforated steel mesh, lined with acoustically transparent foam, providing a durable visually appealing finish.

The SFM07A passive crossover provides a seamless transition between the transducers.

The crossover frequency is selected to enhance the already superb performance of the individual components. Great care is taken to ensure that a phase coherent output is maintained across the entire audio bandwidth.



### Acoustic Technologies

8-10 Staple Street, Seventeen Mile Rocks  
Queensland 4073, Australia  
Phone (617) 3376-4122 | Fax (617) 3376-5793  
Web [www.atprofessional.com.au](http://www.atprofessional.com.au)  
Email [info@atprofessional.com.au](mailto:info@atprofessional.com.au)