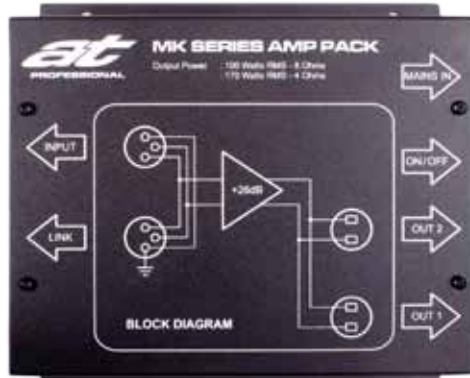


# MK SERIES AMP PACK



There are many audio installations which are not suited to standard rack mount amplifiers. This is especially true for commercial and audio-visual installations where long speaker cable runs can result in a serious loss of performance and fidelity. In many distributed audio systems there may not be a suitable centralized location for the equipment racks and cabling.

The Acoustic Technologies' MK Series Amp Pack is a self contained single channel audio power amplifier housed in a small enclosure designed specifically for wall or ceiling mounting in distributed audio systems.

The MK Series Amp Pack is a highly efficient Class 'D' Amplifier with an integrated Switch Mode Power Supply. The amplifier provides Soft Limit and Thermal Overload protection, balanced XLR input and link audio connectors, dual Speakon output connectors, IEC mains inlet and a mains power switch. The amplifier provides 175 Watts Program into 4 Ohm loads. There is no cooling fan insuring silent operation in noise sensitive installations.

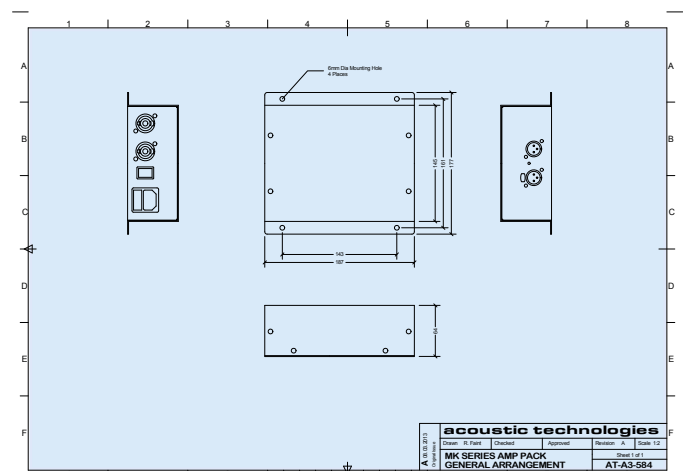
The MK Series Amp Pack finds ready acceptance in a diverse range of applications including audiovisual installations, commercial and retail distributed audio systems, meeting and classrooms, museums and exhibition centres.

## Key Features

- 175 Watts Program into 4 ohms
- Balanced XLR Input and Link Output
- Speakon Outputs
- No fans for silent operation
- Efficient Class 'D' Amplifier and SMPS

## Overview

- Dimensions: 187mm (w) x 177mm (D) x 64mm (H)
- Weight: 1.3kgs
- Mounting: Designed for wall and ceiling mounting
- Finish: Satin Black Powdercoat



# MK SERIES AMP PACK



Input Impedance	10k Ohms Balanced
Output Power	175 Watts Program into 4 Ohms @ 1% THD+N
Frequency Response	20Hz - 20kHz $\pm$ 0.1dB
Total Harmonic Distortion + Noise	0.002% at 1 Watt 1.0% at Rated Output Power
Output Load Range	4 Ohms to Open Circuit
Mains Voltage	230Volts AC
Amplifier Type	Class 'D' Amplifier Switch Mode Power Supply
Amplifier Protection	Thermal Over Current HF on Input Signal Output Limit
Indicator LED	Mains On
Connectors & Switches	Female XLR - Signal Input Male XLR - Signal Link Output 2x Speakon Amplifier Outputs IEC Mains Inlet with Fuse Mains Switch
Physical Size	187mm (W) x 177mm (D) x 64mm (H)
Weight	1.3 Kgs
Chassis Finish	Satin Black Powdercoat

## Suggested Applications

- Audiovisual Installations
- Commercial and Retail Distributed Audio Systems
- Meeting and Classrooms
- Museums and Exhibition Centres

- For further information and downloads visit [www.atprofessional.com.au](http://www.atprofessional.com.au)



## Acoustic Technologies

8-10 Staple Street, Seventeen Mile Rocks  
Queensland 4073, Australia  
Phone (617) 3376-4122 | Fax (617) 3376-5793  
Web [www.atprofessional.com.au](http://www.atprofessional.com.au)  
Email [info@atprofessional.com.au](mailto:info@atprofessional.com.au)