

FR21A

SELF POWERED SPEAKER SYSTEM



MANUFACTURED IN AUSTRALIA



Touring & Installation

The Acoustic Technologies FR21A is a self powered full range loudspeaker system providing exceptional performance for a broad range of sound reinforcement applications.

The FR21A is a ported enclosure utilising a premium 12" Bass-Mid Neodymium transducer and a 1" High Frequency compression driver coupled to a 100° x 40° waveguide designed specifically for this application. The optimised passive crossover network provides a seamless, phase coherent transition between the system components.

The FR21A is powered by a highly efficient 1175 Watts RMS Class D Power Amplifier Module which features an integrated Switch Mode Power Supply. The amplifier module provides Soft Limit and Thermal Overload protection, balanced XLR audio connectors, Mains LED and a Limit Active LED. A Powercon® mains inlet connector, power switch, and mains circuit breaker are provided on the rear panel.

The cabinet is constructed from premium grade birch ply finished in black AcoustiCoate. A perforated steel mesh grille protects the system components. The FR21A hardware includes rigging track for safe suspension, an industry standard polemount adaptor and recessed handgrips for easy handling.

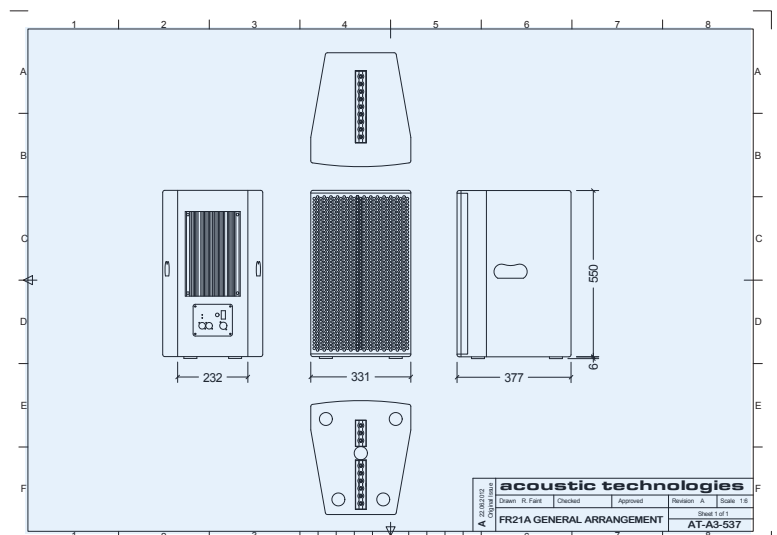
The FR21A is ideal for any installed or portable application requiring a self powered full range speaker system, such as corporate audiovisual presentations, live music production, houses of worship and theatre performances.

Key Features

- ▶ Compact Full Range Design
- ▶ High Efficiency Class D Amplifier
- ▶ Industry Standard Rigging Track
- ▶ 5 Year Warranty

Overview

- ▶ Dimensions: 331mm (W) x 550mm (H) x 377mm (D)
- ▶ Weight: 24.1 Kgs
- ▶ Finish: Black AcoustiCoate
- ▶ Transducers: 1x 12" Bass - Mid Transducer
1x 1" HF Compression Driver
- ▶ Amplification: 1175W Class D Amplifier Module



FR21A

SELF POWERED SPEAKER SYSTEM



Acoustic Performance

Frequency Response	90Hz - 21kHz ± 3dB
Sensitivity	98dB @ 1 Watt, 1 metre
Maximum SPL (Calculated)	129dB @ 1 metre
High Frequency Dispersion	100°(H) x 40°(V)

System Components

Transducer Complement	1x 12" Bass - Mid Neodymium Transducer 1x 1" HF Neodymium Compression Driver Coupled to a Proprietary Low Distortion HF Wave Guide
Crossover Network	Optimised Passive Network @ 1.3kHz

Amplifier Specifications

Input Impedance	8k Ohms
Amplifier Module Output Power	1175 Watts
Amplifier Module Type	Class D Amplifier Switch Mode Power Supply
Amplifier Protection	Thermal Over Current HF on Input Signal Output Limit
Indicator LEDs	Mains On Output Limit
Connectors & Switches	Female XLR - Signal Input Male XLR - Signal Link Powercon® AC Mains Inlet Mains Switch Mains Circuit Breaker

Enclosure Specifications

Physical Size	331mm (FW) x 232mm (RW) x 550mm (H) x 377mm (D)
Weight	24.1 Kgs
Enclosure Finish	AcoustiCoate Black Elastomer
Grille Finish	Black Powder Coat
Hardware	2x Handgrip Rigging Track Top and Bottom Pole Mount Adaptor Aluminium Feet



Sensitivity, Maximum Power and SPL measurements are conducted in accordance with the AES 24 Hour Pink Noise Standard.

Acoustic Technologies reserve the right to alter or amend the FR21A, without prior warning in the interests of product improvement.

- For further information and downloads please visit www.atprofessional.com.au

Suggested Applications

- Live Music Performances
- Corporate Production
- House of Worship Audio
- Compact Touring Systems
- Festivals and Public Events
- Live Theatre
- Outside Broadcasts
- Mobile DJ Systems

The FR21A enclosure is constructed of high quality 12mm and 18mm birch ply.

The transducers are protected by a perforated steel mesh, lined with acoustically transparent foam, providing a durable visually appealing finish.

The FR21A passive crossover provides a seamless transition between the transducers.

The crossover frequency is selected to enhance the already superb performance of the individual components. Great care is taken to ensure that a phase coherent output is maintained across the entire audio bandwidth.



Acoustic Technologies

8-10 Staple Street, Seventeen Mile Rocks
Queensland 4073, Australia
Phone (617) 3376-4122 | Fax (617) 3376-5793
Web www.atprofessional.com.au
Email info@atprofessional.com.au