



BLACKBIRD CLA SYSTEM

CLA600A

CLA LF3000A



PROFESSIONAL AUDIO PRODUCTS
MADE IN AUSTRALIA

Self Powered Composite Line Array

CLA600A: 4x 8” Low-Mid Driver + 2x 3” ISOPHASIC HF Array
Dual Channel Class D Amplifier Module

CLA LF3000: 1x 18” Sub Bass Driver
Single Channel Class D Amplifier Module

The CLA600A Composite Line Array and the CLA LF3000A Sub Bass Enclosure combine to create the self powered BLACKBIRD CLA Sound Reinforcement System. The BLACKBIRD CLA System is the ideal solution for compact touring or in-house systems offering highly advanced line array technology in a compact and easy to use format.

The CLA600A is a 2 way composite line array system utilizing well established line array principals to achieve exceptional frequency response and pattern control. The Bass/Mid Section features 4x 8”, Neodymium Loudspeakers. The critical High Frequencies are reproduced by a dual element ISOPHASIC HF Aperture.

The CLA600A’s dispersion pattern is 150° Horizontal by 20° Vertical providing maximum audience coverage with unparalleled intelligibility. When 2x CLA600A’s are stacked, the vertical dispersion is reduced to 10°. Frequency response is flat 65Hz to 18kHz.

The CLA LF3000A Sub Bass System employs a high power handling 18” transducer to provide a frequency response from 32Hz to 200Hz which is tailored to perfectly compliment the CLA600A.

The CLA600A and CLA LF3000A are powered by sophisticated Class D Amplifier Modules which feature fully integrated Switch Mode Power Supplies and onboard Digital Signal Processing. Output power is 1,250 Watts Program per channel for dual channel mode and 2,500 Watts Program for single channel mode.

The Digital Signal Processing in each amplifier module is configured with Acoustic Technologies Factory Recommended Settings which guarantees optimal system performance, output power and long term reliability

BvNET hardware and Podware software facilitates system wide networking capabilities providing complete control and monitoring of the DSP and amplifiers.

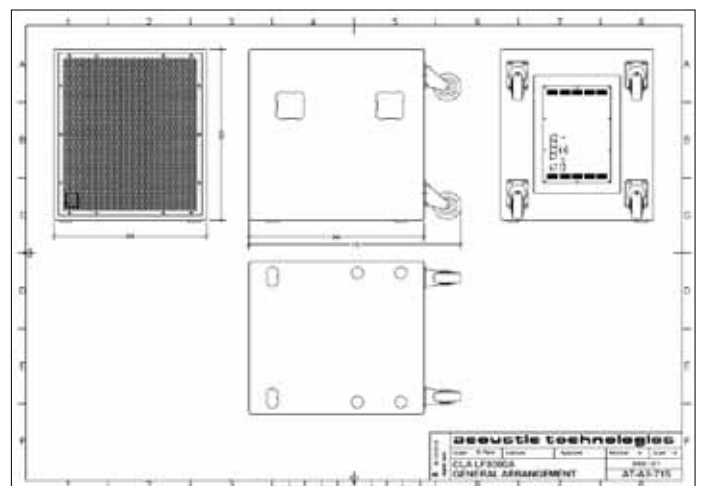
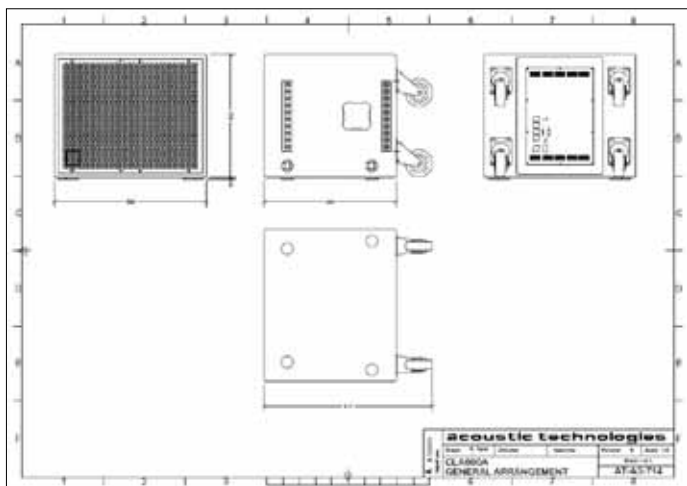
A standard self powered BLACKBIRD CLA Systems uses 2x CLA600A Line Array Cabinets and 2x CLA LF3000A Sub Bass Cabinets per stack. Enhanced low frequency reinforcement can be readily achieved with an additional 2x CLA LF3000A Sub Bass Cabinets per stack.

The cabinets are supplied with handgrips, cabinet locating feet and safety attachment points. Castors are fitted as standard for the CLA LF3000A and are an option for the CLA600A.

Acoustic Technologies Blackbird CLA Series Cabinets are finished in black AcoustiCoate polymer finish with black powder coated grilles.



Touring and Installation





BLACKBIRD CLA SYSTEM

CLA600A

CLA LF3000A



PROFESSIONAL AUDIO PRODUCTS
MADE IN AUSTRALIA



Touring and Installation

CLA600A Specifications

Acoustic Performance

Frequency Response	65Hz - 18kHz ± 3dB
Sensitivity	102dB @ 1 Watt, 1 metre
Maximum SPL (Calculated)	133dB @ 1 metre
High Frequency Dispersion	150° (Horizontal) x 20° (Vertical)

System Components

Transducer Complement	4 x 8" Bass-Mid Transducer 2 x 3" H.F. Transducer on ISOPHASIC Aperture
-----------------------	--

Amplifier Specifications

Input Impedance	10k Balanced
Amplifier Module Output Power	1250 + 1250 Watts RMS
Amplifier Module Type	Dual Channel Class D with on-board DSP Switch Mode Power Supply
Amplifier Protection	Over Current Over Temperature DC on Outputs
Indicator LEDs	Power On Signal Present Limit Active
Connectors	Signal Input & Signal Link XLR Connectors BvNET Input & BvNET Link RJ45 Connectors PowerCon® AC Mains Inlet
Switches	Mains Switch & Circuit Breaker High Pass 65Hz / 80Hz Switch Factory / User Preset Switch

Enclosure Specifications

Physical Size	Height 452mm, Width 560mm, Depth 484mm, 614mm Including Castors
Net Weight	40 Kgs (43Kgs inc Castors)
Enclosure Finish	AcoustiCoate Black Elastomer Finish
Grille Finish	Black Powder Coat Paint Finish
Hardware	2x Handgrips Cabinet Flying Hardware Cabinet Locating and Safety Attach Points for safe cabinet ground stacking

CLA LF3000A Specifications

Acoustic Performance

Frequency Response	32Hz - 200Hz ± 3dB
Sensitivity	98dB @ 1 Watt, 1 metre
Maximum SPL (Calculated)	132dB @ 1 metre

System Components

Transducer Complement	1x 18" Sub Bass Transducer
-----------------------	----------------------------

Amplifier Specifications

Input Impedance	10k Balanced
Amplifier Module Output Power	2500 Watts RMS
Amplifier Module Type	Dual Channel Class D with on-board DSP Switch Mode Power Supply
Amplifier Protection	Over Current Over Temperature DC on Outputs
Indicator LEDs	Power On Signal Present Limit Active
Connectors	Signal Input & Signal Link XLR Connectors BvNET Input & BvNET Link RJ45 Connectors PowerCon® AC Mains Inlet
Switches	Mains Switch & Circuit Breaker High Pass 30Hz / 40Hz Switch Factory / User Preset Switch

Enclosure Specifications

Physical Size	Height 626mm, Width 560mm Depth 640mm, 770mm Including Castors
Weight	56 Kgs
Enclosure Finish	AcoustiCoate Black Elastomer Finish
Grille Finish	Black Powder Coat Paint Finish
Hardware	4x Handgrips 4x Castors Cabinet Locating and Safety Attach Points for safe cabinet ground stacking

Suggested Applications

- Live Music Presentations
- Dance Clubs
- Outdoor Sporting Events
- Houses of Worship
- Corporate Presentations
- Concert Sound
- Festivals
- Public Events

The CLA600A and CLA LF3000A enclosures are constructed of high quality Birch Ply. The transducers are protected by a rugged steel grille. Acoustically transparent PVC foam is bonded to the mesh, providing a durable, visually appealing finish.

Sensitivity, Power Handling and Frequency Response measurements are specified using the Factory Recommended Loudspeaker Management System Settings.

Sensitivity, Maximum Power and SPL measurements are conducted in accordance with the AES 24 Hour Pink Noise Standard.

Acoustic Technologies reserve the right to alter or amend CLA600A and the CLA LF3000A, without prior warning in the interests of product improvement.

- For further information, general arrangement and downloads please visit:

www.atprofessional.com.au



Acoustic Technologies

8-10 Staple Street, Seventeen Mile Rocks
Queensland 4073, Australia
Phone (617) 3376-4122 | Fax (617) 3376-5793
Web www.atprofessional.com.au
Email info@atprofessional.com.au